



Maximum water savings with urinals by uridan.

uridan delivers simplicity, style, sustainability and stunning danish design.





**Waterless urinals
for over 25 years.**

Our Vision+

Water is precious, and flushing a urinal with potable water is a waste of this valuable resource. This is at the heart of everything we do and inspires uridan to continue to innovate, creating products with superior functionality and distinctive Danish design.

Improve sustainability and save costs.

A conventional urinal can use up to 150,000 litres of valuable drinking water per year. uridan aims to conserve this precious resource for the essential things in life.

uridan will reduce your environmental footprint delivering sustainability and savings. Water savings lead to building efficiencies and cost savings. Saving an estimated 150,000 litres per urinal per year – uridan provides a simple sustainable solution.

uridan delivers simplicity, style, sustainability and stunning danish design.

Follow us on our journey and help us to protect this precious resource “water” for our next generation.



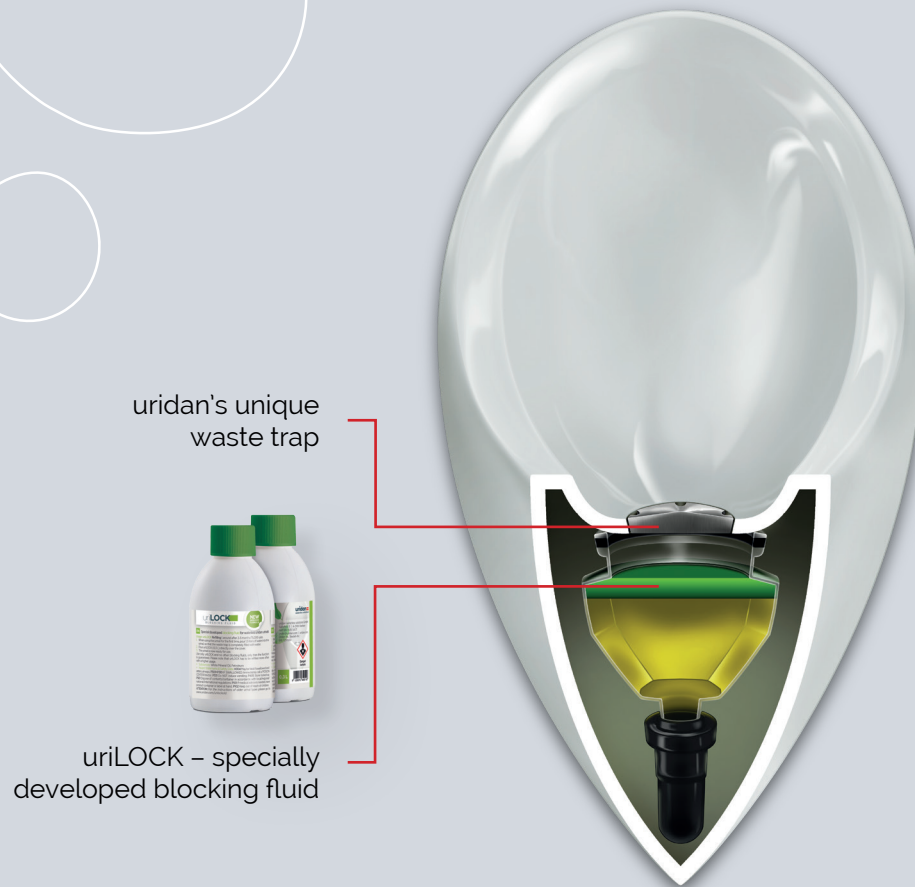
**uridan
Image Film**

Innovative and Unique+

The patented uridan-technology.



uridan
Explainervideo



How it works?

Ongoing research and development have led to today's superior uridan technology and design.

The heart of the uridan urinal is the unique waste trap that works with uriLOCK, uridan's specially developed odour-blocking fluid. uriLOCK is lighter than urine, remaining on the surface of the waste trap, creating a liquid seal.

Your benefits:

- * 100% odourless thanks to the specially developed blocking fluid
- * No water and electricity connection required
- * Reduced installation and ongoing operating costs
- * Simple maintenance due to patented technology
- * Quick daily clean due to the smooth surface of the urinal



**3 Years
Warranty**



Aesthetics: A Labour of Love.

Functional and sustainable with unique Danish Design.

Whether you are designing a residential bathroom or a large commercial project, uridan has the solution. The uridan collection offers a range of standardised products with tailor-made solutions available to meet your unique requirements. Our products can be manufactured in any colour to match your design.

It's your choice.

Master

designed by Troels Bøgely

Dimensions:

740x400x405 mm
(HxWxD, dimensions
may vary slightly)

Colours GRP:

- ☐ White
- ☒ Telegrey 2
- ☐ Black

plus in all
RAL colours



- * **Material:** Glass fibre reinforced plastic (GRP)
- * **Connection:** horizontal

The Master, the newest urinal in the uridan collection, brings modern elegance. It features a slightly higher wall for added comfort and privacy. Ideal for design enthusiasts, it adds a stylish touch to bathrooms while focusing on user comfort.

Admiral

designed by Troels Bøgely

Dimensions:

800x410x407 mm
(HxWxD, dimensions
may vary slightly)

Colours Ceramic:

- ☐ White

Colours GRP:

- ☐ White
- ☒ Telegrey 2
- ☐ Black

plus in all
RAL colours



- * **Material:** Ceramic or glass fibre reinforced plastic (GRP)
- * **Connection:** horizontal oder vertical

The Admiral exudes a distinct elegance. The designer's goal was to make a urinal that's not just visually appealing, but also user-friendly. Its straight-forward design, featuring smooth curves and simple shapes, makes cleaning effortless and maintenance a breeze.



Admiral Mini

designed by Troels Bøgely

Dimensions:

715x362x345 mm
(HxWxD, dimensions may vary slightly)

Colours GRP:

- ☐ White
- ☒ Telegrey 2
- ☐ Black

plus in all
RAL colours



- * **Material:** Glass fibre reinforced plastic (GRP)
- * **Connection:** horizontal

The Admiral Mini shares the distinctive elegance of its larger counterpart, the Admiral. While mirroring the design of the Admiral, it also impresses with its more compact and smaller size. Therefore, this model is perfect for projects with limited space where design cannot be compromised.

Cadet

designed by Troels Bøgely

Dimensions:

530x350x340 mm
(HxWxD, dimensions may vary slightly)

Colours GRP:

- ☐ White
- ☒ Telegrey 2
- ☐ Black

plus in all
RAL colours



- * **Material:** Glass fibre reinforced plastic (GRP)
- * **Connection:** horizontal oder vertical

The timeless design makes the Cadet a true classic. In addition to its classic appearance, the Cadet is extremely space-saving, making it the smallest urinal in the uridan family. It can also be positioned lower on the wall for use as a children's urinal, adding versatility to its functionality.

Captain ♀

designed by Yu Bobek

Dimensions:

970x380x532 mm
(HxWxD, dimensions
may vary slightly)

Colours GRP:

- ☐ White
- ☒ Telegrey 2

plus in all
RAL colours



- * **Material:** Glass fibre reinforced plastic (GRP)
- * **Connection:** vertical

The Captain frees women from long queues at concerts and events, giving them a quick solution to an age old problem. This female waterless urinal is perfectly suited for event hire toilet facilities where there is a requirement to reduce water consumption and queues to amenities. The uridan Captain is a hygienic alternative as there is no contact with the unit and no flush required to operate. Toilet tissue can be disposed of in sensor activated waste bins and privacy can be maintained by installing the units in cubicles.

Compass ♀♂

designed by uridan

with Soft-Close
Function

Dimensions:

430x360x520 mm
(HxWxD, dimensions may
vary slightly)

Colours GRP:

- ☐ White

plus in all
RAL colours



- * **Material:** Glass fibre reinforced plastic (GRP)
- * **Connection:** vertical

The Compass has benefitted from a design upgrade. The new design delivers a softer curve improving both appearance and user comfort. The unit also comes with a newly improved 'soft-close' lid. The Compass has gained popularity in low-energy homes. This versatile urinal can be used by men, women and children alike. Distinguished by a simple, hygienic, unisex design, the Compass is ideal for locations with a limited water supply.

Pylon

designed by Troels Bøgely

Dimensions:

Maxi 940x335x412 mm
Midi 815x335x412 mm
(HxWxD, dimensions may vary slightly)

Colours GRP:

☐ White
☒ Telegrey 2
☒ Black

plus in all
RAL colours



- * **Material:** Glass fibre reinforced plastic (GRP)
- * **Connection:** vertical

The Pylon is possibly uridan's most 'funky' design created specifically for clubs, pubs, restaurants and hotels looking for a more modern look. The simple sophisticated unit is available in two heights: Pylon Midi and Maxi. The Pylon is particularly versatile as the urinal can be installed over existing toilet plumbing, delivering further installation cost benefits.

Crew

designed by uridan

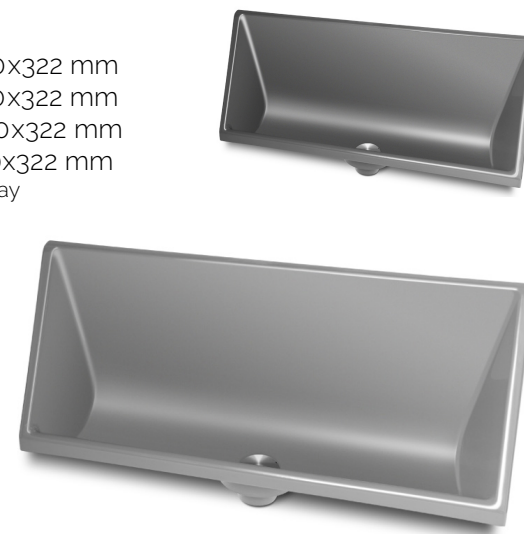
Dimensions:

120cm - 550x1200x322 mm
140cm - 550x1400x322 mm
180cm - 550x1800x322 mm
240cm - 550x2400x322 mm
(HxWxD, dimensions may vary slightly)

Colours GRP:

☒ Telegrey 2
☒ Iron Grey

plus in all
RAL colours



- * **Material:** Glass fibre reinforced plastic (GRP)
- * **Connection:** horizontal oder vertical

This trough-urinal is ideally suited for venues catering for a large number of males. Widely used in sporting venues, entertainment centres, demountable buildings and schools, the Crew is available in four lengths: 120cm, 140cm, 180cm and 240cm. Apart from the obvious water savings, the resilient fibreglass material provides a high level of protection against vandalism.

Spinnaker

designed by Troels Bøgely

Dimensions:

1140x100x400 mm
(HxWxD, dimensions may
vary slightly)

Colours GRP:

- ☐ White
- ☐ Telegrey 2
- ☐ Black

**plus in all
RAL colours**



+ Material: Glass fibre reinforced plastic (GRP)

Originally designed to complement the design lines of the uridan Admiral, the Spinnaker privacy screen can be used alongside any uridan urinal. The urinal-screen hangs freely on the wall with no visible wall brackets. The Spinnaker is a stylish addition, providing privacy and comfort for users in commercial amenities. The Spinnaker is available in standard colours, with tailored colour solutions for specific room concepts.



- + So diverse**
- + So well-designed**
- + So user-friendly**

uridan delivers sustainability, performance and outstanding danish design.

Frequently specified for large commercial office towers, sporting stadiums, shopping centres, schools, universities, restaurants, hotels, bars and clubs, uridan urinals combine environmental performance, operating cost benefits and great design.

In an effort to help manage water globally, the uridan collection is now available across the globe.

Let's work together to save our most precious resource.



The Future is Now:

The innovative, new HighTech Cover indicates when the uriLOCK refill is required.

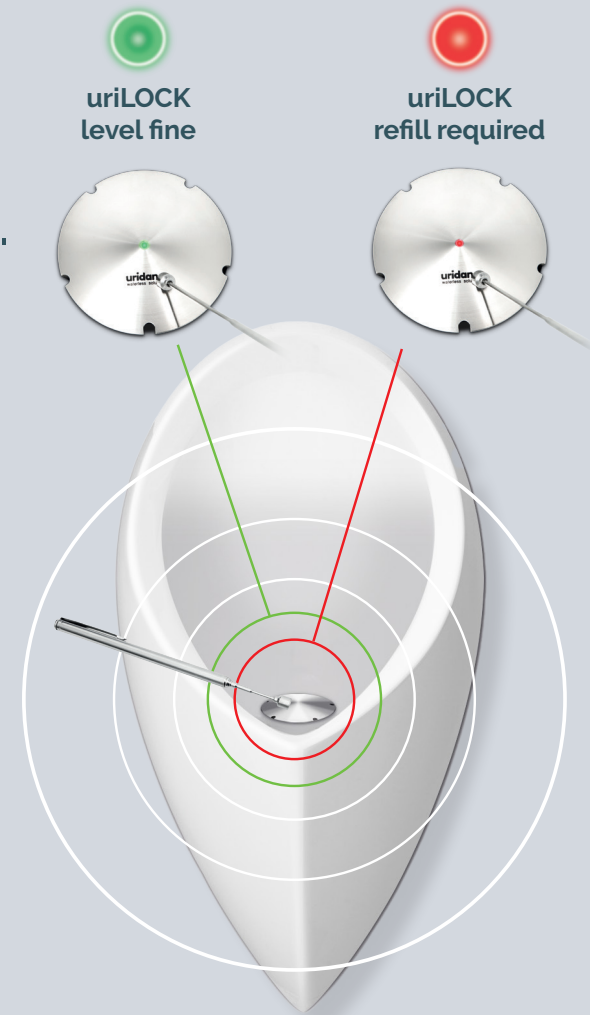


LED light indicates the level of the uriLOCK blocking fluid.

LED light is activated by touching the **flag of the uridan logo** with the **magnetic pen**.

Electronics with built-in battery.

Electrodes measure the **uriLOCK** level in the urinal.



Say goodbye to the unnecessary opening of the cover to check if there is enough uriLOCK blocking fluid in the urinal. The HighTech cover indicates when the uriLOCK refill is required.

How does it work? The fluid level is determined by the HighTech cover's new, intelligent, built-in technology. To monitor the fluid level, simply swipe the cover with a magnetic pen and an LED-light will indicate if there is enough uriLOCK blocking fluid in the urinal. Green indicates that the uriLOCK level is fine. Red indicates that a uriLOCK refill is required. The cover is battery operated. Battery life is up to 8 years.

Cleaning and Maintenance. Fast, Simple & Effective.

uri**CLEAN** Cleaning+

Spray on **uriCLEAN**
and polish with
uriCLOTH.



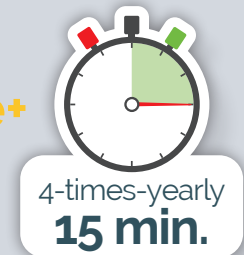
uri**LOCK** Refilling+

Refill 0,3l **uriLOCK**
every 3 months.



uri**STRONG** uri**TABS** Maintenance+

Rinse with
uriSTRONG/
uriTABS 4 times
a year.





uridan Australia – A Division of SUMS Group Pty Ltd
6/20 Narabang Way
Belrose NSW 2106

uridanaustralia.com.au
uridan@sums.com.au
+61 2 9986 2700